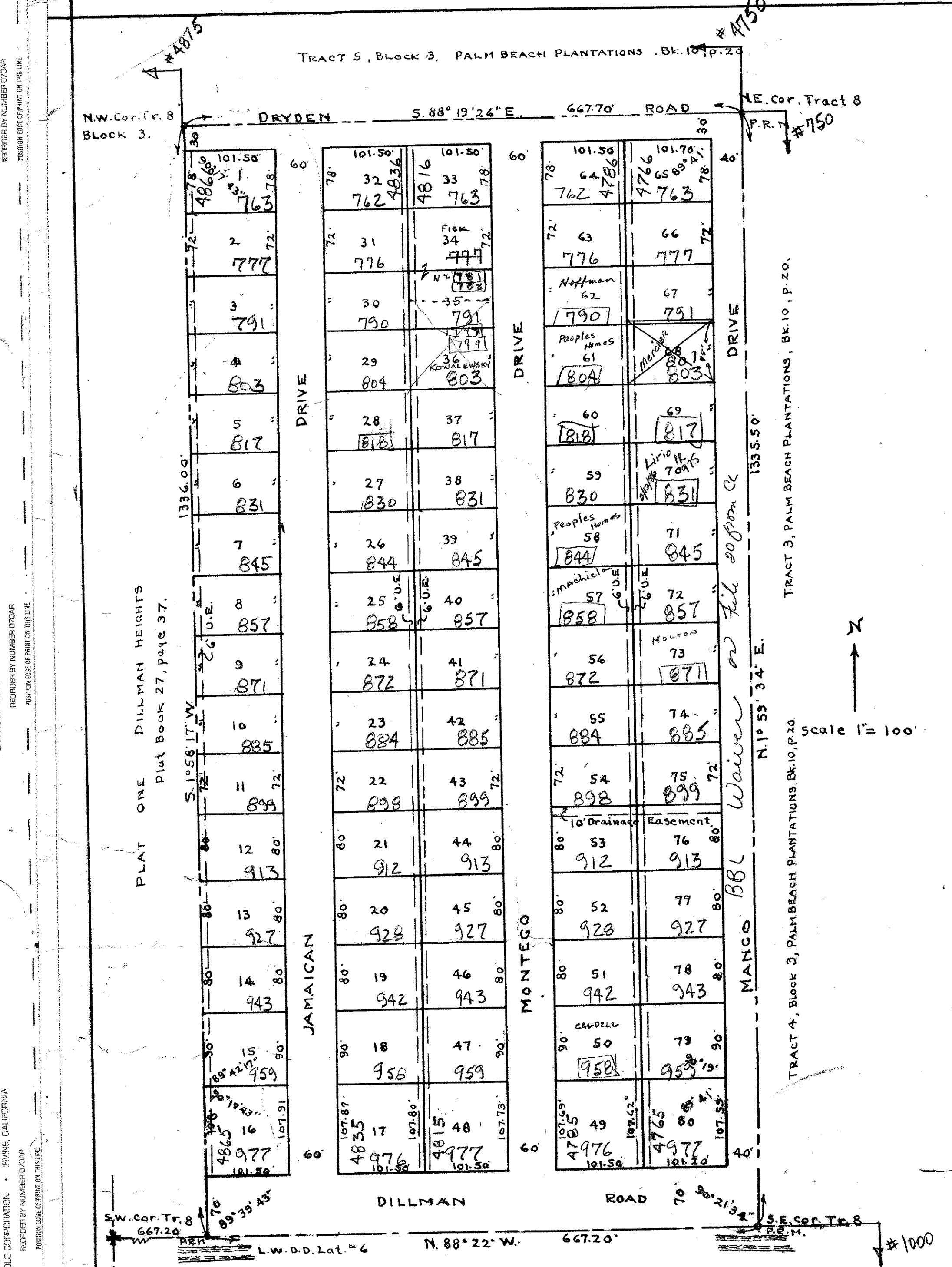


DRAWING NUMBER  
**27-75**

DRAWING NUMBER

DRAWING NUMBER

DRAWING NUMBER



There shall not be any buildings or utility easements.  
There shall not be any buildings or any kind of construction or planting of trees or shrubs on drainage easements.  
Easements are for public utilities unless shown. Building set back lines shall be as required by the Palm Beach County Zoning Commission.

1961  
**75**

STATE OF FLORIDA  
COUNTY OF PALM BEACH  
6<sup>th</sup> 12<sup>th</sup> January 1961  
27 75  
J. M. Blackburg, c

**DEDICATION**

STATE OF FLORIDA }  
COUNTY OF PALM BEACH } ss.  
Know all men by these presents that Double-R-J Ranch, Inc., west Palm Beach, Fla. is owner in fee simple of a tract of land shown on this plat as PLAT THREE DILLMAN HEIGHTS, located in Palm Beach County, Florida and described as follows:  
Tract 8, Block 3, PALM BEACH PLANTATIONS (MODEL LAND CO) Plat No. 1, Plat Book 10, page 20, and by and with the authority of the Board of Directors has caused the same to be surveyed and platted as shown hereon and has hereby dedicated to the perpetual use of the public highways, all Roads and drives as shown hereon, and the owner also dedicates to the perpetual use of the public the easements shown hereon for the purposes as stated on this plat.

In witness whereof the said corporation has caused these presents to be signed by its President and attested by its Secretary and its corporate seal affixed hereto, by and with the authority of its Board of Directors this 30<sup>th</sup> day of October 1961.

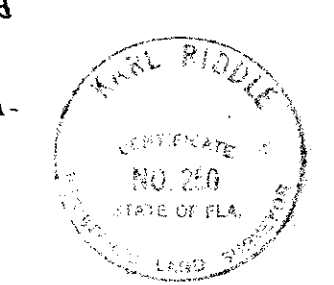
By: Sallie A. Harth  
President.  
Attest: Richard B. Burk  
Secretary.

**ACKNOWLEDGEMENT**

STATE OF FLORIDA }  
COUNTY OF PALM BEACH } ss.  
I hereby certify that on this day personally appeared before me, an officer duly authorized to administer oaths and take acknowledgements, Sallie A. Harth and Richard B. Burk, President and Secretary, respectively of Double-R-J Ranch, Inc., a Florida Corporation, to me well known and known to me to be the individuals described in, and who executed the foregoing dedication, and they acknowledged before me that they executed the same as such officers of said Corporation by and with the authority of the Board of Directors of said Corporation, for the purposes thereof expressed, and that their act and deed was the act and deed of said Corporation.  
Witness my hand and official seal at West Palm Beach, County of Palm Beach, and State of Florida, this 30<sup>th</sup> day of October A.D. 1961.  
My Commission expires: 10-9-63

Talbot C. Scott  
Notary Public

STATE OF FLORIDA }  
COUNTY OF PALM BEACH } ss.  
I hereby certify that the plat shown hereon is a true and correct representation of a survey made under my direction and is accurate to the best of my knowledge and belief, and that permanent reference monuments (P.R.M.) have been set as required by law.  
Karl Pissile  
Registered Land Surveyor.  
Fla. Cert. No. 250.

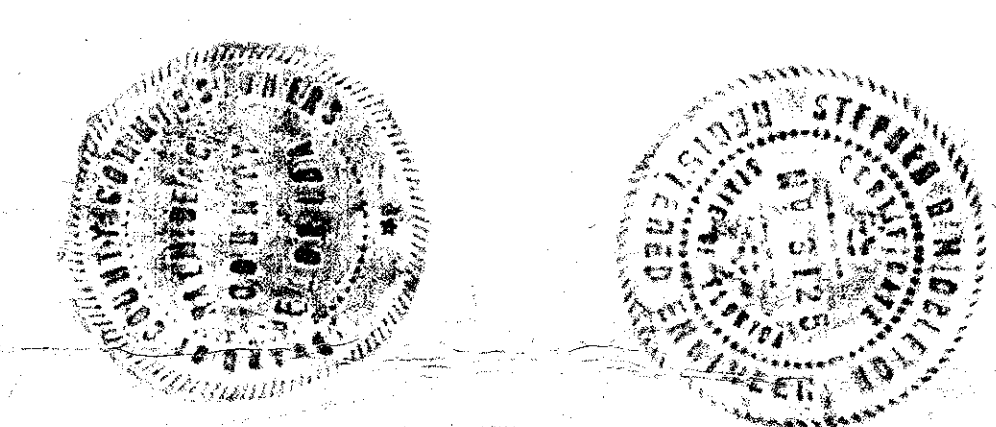


Final date of survey 10-26-61.  
Subscribed and sworn to before me this 30<sup>th</sup> day of October 1961.  
My Commission expires: 10-9-63

1000-285

Talbot C. Scott  
Notary Public

Approved: 12 JAN. A.D. 1962  
Board of County Commissioners  
By: Leo D'Agel  
Chairman  
By: Richard M. ...  
County Engineer



1-44-42

27  
75